



American Society of Agricultural and Biological Engineers

The Puerto Rico Section, 1982-2007

**Meeting theme:
Economics & Technology for a Sustainable Puerto Rico in 22nd
Century
April 7, 2009 at Mortgage Bankers Association Building
Hato Rey – Puerto Rico**

Paper number: ASABE-PRS-2009-01

Satellite-Based Daily Evapotranspiration Estimation in Puerto Rico

Eric W. Harmsen, Ph.D., P.E.
Professor in the Department of Agricultural and Biosystems Engineering
University of Puerto Rico – Mayagüez Campus,
email: eharmsen@uprm.edu

Abstract: A technique is presented in which satellite solar insolation estimates are used to predict daily reference evapotranspiration (ET_0) using the Penman-Monteith (PM), Priestly-Taylor (PT) and Hargreaves-Samani (HS) methods for Puerto Rico. For this approach, average, minimum and maximum daily air temperatures were obtained from a regression procedure that depends on surface elevation and day of the year. The air temperature was adjusted using actual daily temperatures from several locations in PR. Dew point temperature was assumed to be equal to the daily minimum temperature, and a value of 1.9 m/s was assumed for wind speed. As an example, ET_0 was estimated for March 5, 2009 using the three methods, with the Penman-Monteith method producing the lowest values. This research represents a preliminary step in the development of an ET_0 product for PR. This product is a potentially valuable tool for conducting water resource studies and for supporting irrigation scheduling efforts.

Key-Words: - GOES, satellite, remote sensing, Penman-Monteith, Priestly-Taylor, Hargreaves-Samani, evapotranspiration

Written for presentation at the 27th Meeting of the Puerto Rico Section of ASABE on April 7, 2009 at Mortgage Bankers Association Building, Hato Rey - Puerto Rico.

The authors are solely responsible for the content of this technical presentation. The technical presentation does not necessarily reflect the official position of ASABE, and its printing and distribution does not constitute an endorsement of views which may be expressed. Technical presentations are not subject to the formal peer review process, therefore, they are not to be presented as refereed publications. Citation of this work should state that it is from an ASABE Puerto Rico Section Meeting paper. EXAMPLE: Author's Last Name, Initials. 2008. Title of Presentation. **ASABE Puerto Rico Section Meeting Paper No. ASABE-PRS-2009-01**. St. Joseph, Mich.: ASABE.

For information about securing permission to reprint or reproduce a technical presentation, please contact ASABE at rutter@asabe.org or 269-429-0300 (2950 Niles Road, St. Joseph, MI 49085-9659 USA).

INTRODUCTION

Determination of evapotranspiration is important for evaluation of hydrologic resources of a region, and evaluating irrigation requirements. Because of the inter-relation between components of the hydrologic cycle, evapotranspiration is important in the evaluation of soil water content, surface runoff, and aquifer recharge. Evapotranspiration (ET) is defined as the combination of evaporation from soil and plant surfaces, and transpiration from plant leaves. Evaporation is the process whereby liquid water is converted to water vapor and removed from the evaporating surface [1]. Transpiration is the vaporization of liquid water contained in plant tissues and its subsequent removal to the atmosphere. Crops predominately lose water through small openings in their leaves called stomata. Evapotranspiration can be expressed in units of mm/day (or in/day), or as an energy flux in units of MJ m⁻² day⁻¹ [1]. Evapotranspiration is important because it is often the largest component of the hydrologic cycle after rainfall. Under arid conditions, potential ET can easily exceed rainfall.

Remote sensing methods for estimating ET are needed for tropical conditions. Various techniques have been developed based on radiation methods (e.g. [2]) and surface energy budgets (e.g., [3, 4]).

The objective of this study was to develop an algorithm for estimating daily, high resolution (1-km), crop reference evapotranspiration (ET_o) over Puerto Rico. Three radiation-based ET_o methods will be tested and compared.

METHODS

In this study we will estimate the ET flux using the Penman-Monteith [1], Priestly-Taylor [5] and Hargreaves-Samani [6] methods, in combination with a solar radiation product of the GOES-12 satellite. Solar radiation was derived using the radiative transfer model of Diak et al. [7]. Input required for the Penman-Monteith

was based on procedures developed for Puerto Rico by Harmsen et al. [8].

Of the three methods, the Penman-Monteith (PM) method is generally regarded as superior because it takes into account the major variables which control evapotranspiration [1], and the method has been rigorously validated under diverse conditions throughout the world [9]. The Penman-Monteith method is given by Allen et al. (1998) as:

$$ET_o = \frac{0.408 \cdot \Delta \cdot (R_n - G) + \gamma \cdot \left(\frac{900}{T + 273} \right) \cdot u_2 \cdot (e_s - e_a)}{\Delta + \gamma \cdot (1 + 0.34 \cdot u_2)} \quad (1)$$

where Δ is slope of the vapor pressure curve [kPa °C⁻¹], R_n is net radiation [MJ m⁻² day⁻¹], G is soil heat flux density [MJ m⁻² day⁻¹], γ is psychrometric constant [kPa °C⁻¹], T is mean daily air temperature at 2 m height [°C], u_2 is wind speed at 2 m height [m s⁻¹], e_s is the saturated vapor pressure and e_a is the actual vapor pressure [kPa]. Equation 1 applies specifically to a hypothetical reference crop with an assumed crop height of 0.12 m, a fixed surface resistance of 70 sec m⁻¹ and an albedo of 0.23.

The Priestly-Taylor equation (PT) represents a simplification of the Penman equation [10, 11] and is valid for humid conditions:

$$ET_o = \alpha \cdot \frac{\Delta \cdot (R_n - G)}{(\Delta + \gamma)} \quad (2)$$

where α is the Priestly-Taylor constant equal to 1.26, and the other variables/parameters were previously defined. A value of 1.32 has been recommended for estimates from vegetated areas as a result of the increase in surface roughness [12]. In this study a value of 1.3 was used.

The Hargreaves-Samani (HS) reference evapotranspiration equation is

$$ET_0 = 0.0135 R_s (T + 17.8) \quad (3)$$

in which ET_0 and solar radiation (insolation), R_s , are in the same equivalent units of water evaporation [$L T^{-1}$], and T is mean temperature in degrees C. Harmsen et al. [8] reported good agreement between the PM and HS methods for 34 locations in Puerto Rico.

Daily average temperature was estimated using the regression equations of Goyal et al. [13], which relate temperature to elevation in Puerto Rico. The equations provide values of daily mean temperature for each month of the year. The monthly data were regressed to obtain a polynomial equation relating the day of the year with air temperature. The average daily air temperature was “nudged” based on the actual average daily temperature measured from the Natural Resource Conservation Service (NRSC) Soil Climate Analysis Network (SCAN) sites in western Puerto Rico. These sites include coastal and mountainous conditions.

An average value of 1.9 m/s was used for wind speed in the PM model based on the published average winds speeds for the six NOAA Climate Divisions for Puerto Rico [8]. This value is close to the world-wide average value of 2 m/s recommended by the FAO [1] in the absence of observed data.

Saturated and actual vapor pressures are estimated based on the average and dew point temperatures, respectively. For convenience, in this study the dew point temperature was assumed to be equal to the minimum temperature based on the regression method for minimum temperature of Goyal et al. [13] and nudged using actual air temperature data from the seven SCAN stations. For humid conditions, use of minimum temperature for dew point temperature is generally a valid assumption. For the drier south and southwest part of Puerto Rico, however, the assumption may lead to errors in the ET_0 calculation.

Solar radiation (R_s) was estimated with the radiative transfer model of Diak et al. [7] using

data from the visible-channel of the GOES satellite. More information on this R_s product can be found in Sumner et al. [2]. The methods presented in Allen et al. [14] were used to calculate extraterrestrial radiation (R_a), R_n and G .

RESULTS

In this section we present the ET_0 estimates based on the PM, PT and HS methods for March 5th, 2009. Table 1 shows the weather information for the seven SCAN stations in Puerto Rico for this day. Figure 1 shows a visible satellite (GOES) image at 15:15 local time (19:15 UTC), indicating large-scale cloud bands covering the region. The National Weather Service in San Juan reported haze, fog and light rain during the day. The National Weather Service (NWS) reported severe rain in Vaga Alta, Puerto Rico with flooding reported at 15:38 local time (19:38 UTC). However, other locations in Puerto Rico experienced little or no rainfall during the day (Table 1). Figure 2 shows the NEXRAD radar total storm rainfall at 15:26 local time (19:26 UTC), indicating rain bands extending across a significant portion of the island.

Table 1. Weather information from the seven SCAN stations on March 5th, 2009.

Site	Isabela	Maricao	Guilarte	Fortuna	Combate	Mayaguez	Bosque
Elevation (m)	15	746	1019	28	10	14	165
Rainfall (mm)	2.8	1.8	14.7	0.0	0.0	1.5	0.0
Average Temperature (C)	23.1	17.6	15.8	23.7	23.8	23.1	22.5
Minimum Temperature (C)	21.9	15.9	14.0	20.6	21.3	21.4	19.5
Maximum Temperature (C)	24.4	18.8	16.9	27.0	27.4	25.4	26.7
Relative Humidity (%)	77.4	96.6	97.1	75.7	68.5	79.6	78.8
Wind Speed (m/s)	4.8	2.3	0.8	2.4	0.9	0.8	0.05
Solar Radiation (W/m2)	255	215	92	304	332	304	211

Figure 3 shows the estimated average air temperature distribution in Puerto Rico on March 5th, 2009. The average air temperature

was based on the regression method of [13] which relates temperature with surface elevation (Figure 4). The estimated versus observed average air temperature are shown in Figure 5. The regression equation was used to estimate the average air temperature in Figure 3.

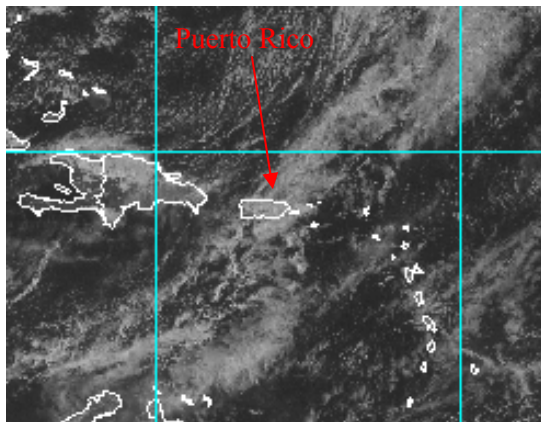


Figure 1. Visible satellite image of Caribbean region at 15:15 local time (19:15 UTC).

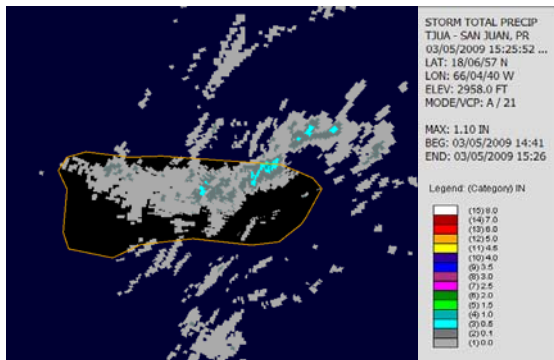


Figure 2. NEXRAD radar storm total precipitation in inches over Puerto Rico at 15:26 local time (19:26 UTC).

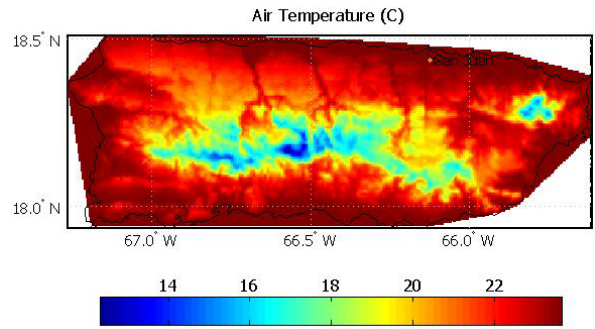


Figure 3. Estimated average air temperature on March 5th, 2009.

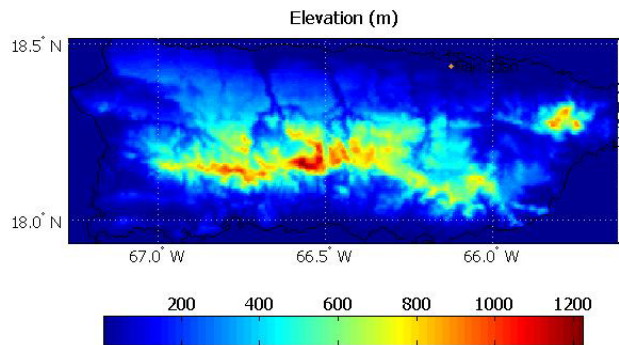


Figure 4. Surface elevation in Puerto Rico.

Figure 6 shows the distribution of solar insolation across Puerto Rico on March 5th, 2009. The figure indicates that the west and south west parts of the island received significantly more solar insolation than central, northern and north eastern Puerto Rico. The southeast received an intermediate level of solar insolation. This spatial pattern of the solar insolation is apparent in the NEXRAD radar storm total precipitation distribution (Figure 2).

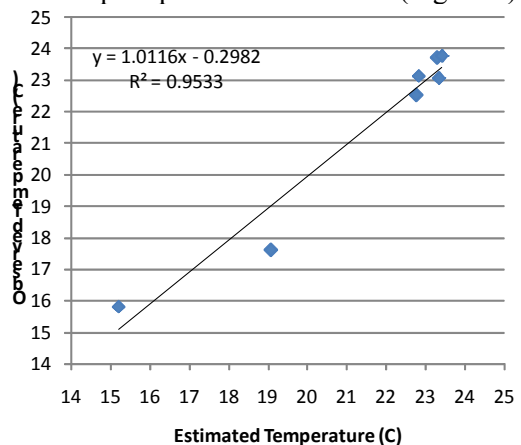


Figure 5. Estimated versus observed daily average temperature at the seven SCAN stations in Puerto Rico. The regression equation was used to estimate air temperature in Figure 3.

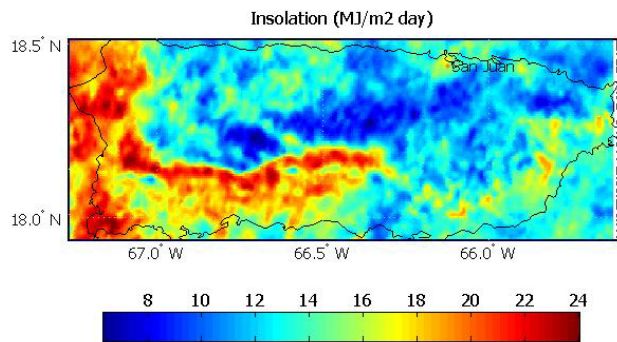


Figure 6. Integrated daily solar insolation for Puerto Rico on March 5th, 2009.

Figure 7, 8 and 9 show the daily ET_o estimated using the PM, PT and HS methods, respectively. The ET_o spatial distributions closely match the solar insolation pattern (Figure 6). In general the three methods are in good agreement. The PM method produced the lowest ET_o values, as compared to the PT and HS methods (see differences in the figure color bars). The lowest ET_o values occur in the mountain areas associated with the lowest air temperatures (Figure 3), and where solar insolation was the lowest.

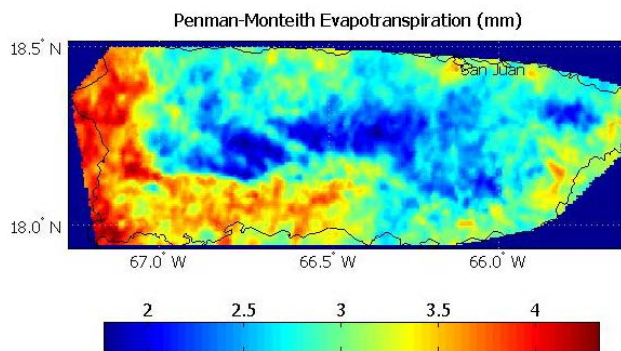


Figure 7. Penman-Monteith ET_o distribution in Puerto Rico for March 5th, 2009.

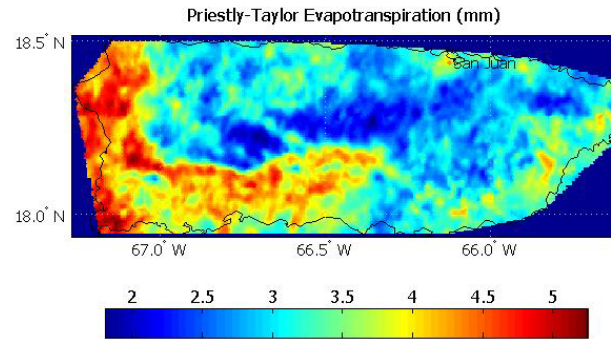


Figure 8. Priestly-Taylor ET_o distribution in Puerto Rico for March 5th, 2009.

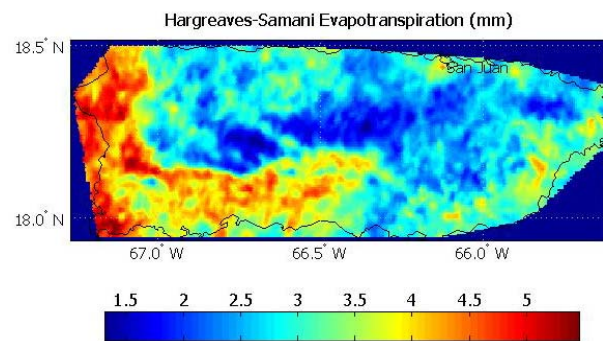


Figure 9. Penman-Monteith ET_o distribution in Puerto Rico for March 5th, 2009.

Table 2 compares the PM, PT and HS ET_o values at the SCAN stations with the long-term average ET_o as calculated by the computer program PRET [15]. All values for March 5th were lower than the long-term average values (PRET). The lowest value of ET_o was associated with the Guilarte site where the observed and estimated solar radiation were 92 and 118 W/m^2 , respectively, and observed and estimated average daily temperatures were 15.8 and 15.2 C, respectively.

METHOD LIMITATIONS

Theoretically, the PM method is the most accurate of the three; however, numerous assumptions were made in developing the input for the PM method. For example, the wind speed was assumed to be 1.9 m/s over the entire island. Table 1 indicates that average daily wind speeds at the SCAN stations varied between

0.05 to 4.8 m/s, with an average of 1.2 m/s. Future efforts need to incorporate spatially varied wind speed. Air temperature was estimated as described in the Methods section. As can be seen from Figure 5, there was excellent agreement between the estimated and observed temperatures at the seven SCAN sites. However, these stations are limited to locations in western Puerto Rico. Central, northern and northeastern Puerto Rico received relatively low levels of insolation as compared to west and southern Puerto Rico, and consequently the estimated air temperatures in those areas may be over estimated.

Table 2. ET_0 estimated by PM, PT and HS methods for March 5th, 2009 compared with the long-term average ET_0 calculated with the Puerto Rico ET (PRET) computer program [15].

Station	Ele. (m)	Latitude	ET_0			
			PRET	PM	PT	HS
Isabela	15	18.28	4.7	3.8	3.6	3.7
Maricao	746	18.15	3.9	3.8	4.1	4.3
Guilarte	1019	18.15	3.7	2.4	2.3	1.9
Fortuna	28	18.03	5.0	3.9	3.7	3.9
Combate	10	17.98	5.0	3.8	3.6	3.8
Mayaguez	14	18.22	4.5	3.9	3.8	4.0
Bosque	165	17.97	5.1	3.4	3.1	3.0

SUMMARY AND CONCLUSIONS

A remote sensing-based technique is presented for estimating evapotranspiration in Puerto Rico. The method relies on solar insolation derived from the GOES satellite. Temperature is estimated from a regression approach which is a function of surface elevation and day of the year. Temperatures are further adjusted using actual daily temperatures from several locations in Puerto Rico. Reference ET_0 s were estimated for Puerto Rico for March 5th, 2009, a day with scattered clouds and rainfall. The Penman-Monteith, Priestly-Taylor and Hargreaves-Samani methods in general produced similar results, with the Penman-Monteith producing the lowest values. Several improvements could be pursued in future research, including the incorporation of spatially variable wind speed, calibration of the insolation algorithm for Puerto Rico, improvement of the dew point temperature

estimation, estimation of short-term (sub-hourly) reference ET_0 , and estimation of the effective crop coefficient based on the Normalized Difference Vegetation Index (NDVI) for estimating actual evapotranspiration.

ACKNOWLEDGEMENTS

This material is based on research supported by NOAA-CREST (NA17AE1625), NSF-CASA, NASA-IDEAS and USDA Hatch (H-402). I would like to thank Dr. John Mecikalski, Assistant Professor, Department of Atmospheric Sciences, University of Alabama in Huntsville (UAH), National Space Science and Technology Center (NSSTC) for providing the solar insolation data. I would also like to thank my graduate students Alejandra Rojas and Melvin Cardona for their assistance on the project.

REFERENCES

- Allen, R. G., L. S. Pereira, Dirk Raes and M. Smith, 1998. Crop Evapotranspiration Guidelines for Computing Crop Water Requirements. FAO Irrigation and Drainage Paper 56, Food and Agriculture Organization of the United Nations, Rome.
- [2] Sumner, D. M, C. S. Pathak, J. R. Mecikalski, S. fJ. Paech, Q. Wu, and T. Sangoyomi, 2008. Calibration of GOES-derived Solar Radiation Data Using Network of Surface Measurements in Florida, USA. Proceedings of the ASCE World Environmental and Water Resources Congress 2008 Ahupua'a.
- [3] Gowda, P. H., J. L. Chávez, P. D. Colaizzi, S. R. Evett, T. A. Howell, and J. A. Tolck, 2007. Remote sensing based energy balance algorithms for mapping ET_0 : Current status and future challenges. Transactions of the American Society of Agricultural and Biological Engineers. Vol. 50(5): 1639-1644.
- [4] Allen, R. G., M. Tasumi, R. Trezza, C. W. Robison, M. Garcia, D. Toll, K. Arsenault, J.M.H. Hendrickx, and J. Kjaersgaard, 2008. Comparison of Evapotranspiration Images Derived from MODIS and Landsat along the Middle Rio Grande. Proceedings of the

- ASCE World Environmental and Water Resources Congress 2008 Ahupua'a.
- [5] Priestly, C.H.B. and R.J. Taylor. 1972. On the assessment of surface heat flux and evaporation using large scale parameters. *Mon. Weath. Rev.* 100:81-92.
- [6] Hargreaves, G. H. and Z. A. Samani, 1985. Reference Crop Evapotranspiration from Temperature. *Appl. Eng. Agric., ASAE.* 1(2):96-9.
- [7] Diak, G. R., W. L. Bland, and J. R. Mecikalski, 1996. A note on first estimates of surface insolation from GOES-8 visible satellite data, *Agric. For. Meteor.*, 82, 219–226.
- [8] Harmsen, E. W., M. R. Goyal, and S. Torres Justiniano, 2002. Estimating Evapotranspiration in Puerto Rico. *J. Agric. Univ. P.R.* 86(1-2):35-54.
- [9] Jensen, M. E., R. D. Burman, and R. G. Allen. 1990. Evapotranspiration and irrigation water requirements. *ASCE Manuals and Reports on Engineering Practice No. 70.* 332 pp.
- [10] Penman, H.L. 1948. "Natural evaporation from open water, bare soil, and grass," *Proc. R. Soc., London.*, vol A193:120-145.
- [11] Penman, H.L. 1963. *Vegetation and Hydrology, Tech. Comm. 53.* Commonwealth Bureau of soils, Harpenden, England.
- [12] Morton, F.I. 1983. Operational estimates of areal evapotranspiration and their significance to the science and practice of hydrology. *Journal of Hydrology*, 66: 1-76.
- [13] Goyal, M. R., E. A. González, C. Chao de Báez, 1988. Temperature versus elevation relationships for Puerto Rico. *J. Agric. UPR* 72(3):449-67.
- [14] Allen, R. G., I. A. Walter, R. Elliott, R. Howell, D. Itenfisu and M. Jensen, R. L. Snyder, 2005. The ASCE Standardized Reference Evapotranspiration Equation. *Environmental and Water Resources Institute of the American Society of Civil Engineers.* 57 pages.
- [15] Harmsen, E. W. and A. González, 2005. Technical Note: A Computer Program for Estimating Crop Evapotranspiration in

Puerto Rico, by *J. Agric. Univ. P.R.* 89(1-2):107-113.